



Energia e Innovazione

ELECTROINDUSTRIAL INSTALLATIONS FOR OVER 40 YEARS

# ICEEL S. r. l.

ELECTRICAL AND ELECTRONIC CONSTRUCTION COMPANY



Energia e Innovazione



Energia e Innovazione



Energia e Innovazione



Energia e Innovazione



ELECTROINDUSTRIAL INSTALLATIONS FOR OVER 40 YEARS

## VALUES

### FLEXIBILITY

**The ICEEL Srl has been operating successfully in the field of electroindustrial installations for nearly 40 years.**

Thanks to the **flexibility** that is not common, it has managed to diversify industry-specific interventions and the construction of plants, electrical and electronic equipment for industrial applications.

The ability to **measure** all work with the investment plans of the customer, allows ICEEL to create tailor-made **solutions** which has realized important relationships and earned important consideration and credit.

### CULTURE AND INNOVATION

**The experience of ICEEL Srl, gained over the years, also for the work of highly qualified management and staff, has been the engine to acquire a real "culture" system able to ensure the optimization of execution.**

This was the starting point to tend to continuous improvement and to ensure technological **innovation** in the choices of installations, maintenance and management to ensure the overall quality of its interventions.

### SAFETY

**Aware of the fact that life is a precious, unique and indispensable ICEEL prefigured and pursued a path of "safety objective" for years, that lead her through a challenging policy in the field, to reach advanced results in this capital area.**

The planning refresher courses combined with specific **awareness** of staff and collaborators to continued compliance with the rules of hygiene and safety and the use of specific devices adapted to various types of risk, allows ICEEL to **prevent** the possible cause of injury and ponder wisely the residual risks present in each intervention..



ELECTROINDUSTRIAL INSTALLATIONS FOR OVER 40 YEARS

### **CONTINUOUS TECHNOLOGICAL IMPROVEMENT AND QUALITY**

**Technological innovation inherent in the electrotechnics and electronics field is constantly followed by ICEEL to ensure the customer all results always in line with the most modern and reliable solutions in this regard.**

The quality of their work is constantly **monitored** and equipped with instruments that can measure the level of work by observations and specific indications that the more discerning customers are able to provide.

All this tends to the limit of **total quality** where the satisfaction of the company is perfectly matched with quality of the customer.

### **AVAILABILITY AND TEAMWORK**

**The ability to listen to the customer is crucial to ensure its full satisfaction.**

The ICEEL ensures the **readiness** to follow the directions given and is placed in order to collect all the tips that can help the customer to provide a product that would reflect the best of what you expect.

The same choice is profuse in requests for immediate action to resolve production problems (shutdown, block production lines, etc ...) or special requests for advice for solving problems peculiar to plant.

The ability to work in a team allows the ICEEL to best develop the specific job orders as the contribution of each member of the group is to support **the global solution** of the individual concerned.

### **TO CUSTOMER SERVICE AFTER INSTALLATION**

**The ICEEL offers a maintenance service that is programmed on call that allows us to support our customers in the best way, to ensure non-stop of production and detect faults in a very short time, all to keep the plant intact and efficient, and low management costs.**

The maintenance department is structured to ensure: diagnosis problem and its repair, overhaul and failure prevention, emergency response with rapid availability of the necessary spare parts.



Energia e Innovazione

ELECTROINDUSTRIAL INSTALLATIONS FOR OVER 40 YEARS

## COMPANY GENERAL INFORMATION

*HEADQUARTER*

**ROME – Via Boezio 4/C (ITALY)**

*OFFICE*

**VASTO (CH) - Via S. Leonardo 7/F (ITALY)**

*ROME C.C.I.A.A. ENTRY*

**N. 00691220636**

*ROME REA ENTRY*

**N. 1299045**

*CHIETI REA ENTRY*

**N. 70009**

CHIEF EXECUTIVE OFFICER (CEO)

**Marcello Dassori**

OPERATION MANAGER

**Stefano de Nobile**

TECHNICAL MANAGERS

**Stefano de Nobile**

### *I.N.A.I.L. CHIETI INSURANCE REFERENCE*

- **Company Code:** N° 3557570 / 25
- **Administrative Employees** N° 28243398 / 16
- **Workers** N° 93146013 / 17

### *I.N.P.S. INSURANCE REFERENCE N. 2300630581*

### *INSURANCE COMPANY REFERENCE*

- **Company** UNIPOLSAI
- **Bill** N. 1/53687/61/154180684



Energia e Innovazione

**ELECTROINDUSTRIAL INSTALLATIONS FOR OVER 40 YEARS**



Energia e Innovazione

**The central part of ICEEL's business is installation, which is always performed using scrupulous quality control system.**

The entire range of ICEEL services, offering the most advanced techniques in electronic systems, boasts practically and careful planning of the post sale management process.

In all ICEEL sites, highly specialized personnel follow the most up-to-date regulations and guarantee maximum optimization of installation times.



*ICEEL MAKE THE FOLLOWING ELECTROINDUSTRIAL INSTALLATIONS:*

- Industrial electronics installations
- Electrotechnical applications to precision mechanics
- Electronics on numerical control machines
- Hospital-technology systems
- Electroindustrial automation
- Remote control system
- Telephony
- Noise diffusion and noise systems
- Emergency systems (electric generator)
- Heliosolar photovoltaics
- Security and closed-circuit TV surveillance systems
- Lighting for large areas
- Public lighting
- Residential electrical lighting
- Electro-pneumatics
- Instrumental electronics
- Lighting absorption systems
- Medium to low voltage energy transformation
- Anti-explosion systems
- Active cathode protection
- Industrial control boards

*SERVICES AND CONSULTATION*

- Research
- Site evaluation
- Investigation of feasibility
- Plan proposal for electro-technical solutions
- Specifics on each operation
- Determination of materials
- Identifications of regulations
- Work stage scheduling
- Initiating and carrying out of operations
- Execution of project and mounting
- Function test
- Testing and start-up
- Start-up assistance
- Training



## ELECTROINDUSTRIAL INSTALLATIONS FOR OVER 40 YEARS



**ICEEL, during his forty years of experience in the industry, has acquired a considerable "know how" in the field of alternative and renewable energy.**

The company can boast significant achievements in the areas of:

**Photovoltaic:** ICEEL in 1992, in collaboration with Ansaldo Industria e Italsolar (Eurosolare today), he built one of the first 1 MWp photovoltaic power stations built throughout the country. The plant is still experimental model for the construction of photovoltaic power plants of considerable size, and ICEEL takes care of its management and maintenance for over twenty years.

The company has also made several plants pursuit, in which the energy captured from the sun is further increased by more than 35% by combining an electric motor biaxial automatic logic managed by astronomical clocks.

**Wind:** ICEEL has developed systems for MV distribution power of wind farms for over 150 towers on the ridge of the Apennines of Castiglione MM - Montazzoli (CH), with interconnection and execution of joints and terminations medium voltage cables of 20KV.

**Hydroelectric:** ICEEL was responsible for the maintenance of hydroelectric power plants in Busso (CB), equipped with Francis turbines in the medium / low head, and systems management start-up and adjustment of synchronous alternators and electromechanical systems for recording and energy metering.



The company has also acquired specific experience in cogeneration, collaborating in the design of executive power plants fueled by both traditional fossil fuels that eco-friendly products



Energia e Innovazione

**ELECTROINDUSTRIAL INSTALLATIONS FOR OVER 40 YEARS**



Energia e Innovazione

**ICEEL offers an excellent Maintenance Service of both scheduled and emergency repair intervention, moulded to the characteristics of each operational environment.**

Offering a complete, trustworthy and timely Maintenance Service allows ICEEL to assist their clients in the best way possible, guaranteeing non-stop production and alleviating breakdowns very quickly.

This also means conservation of the system and its efficiency while keeping operational costs moderate

**ICEEL maintenance department is structured to offer the following types of technical assistance :**

- Repairs
- Problem diagnosis
- Periodical check-up
- Emergency repair intervention
- Prevention maintenance
- Quick changing of parts





Energia e Innovazione

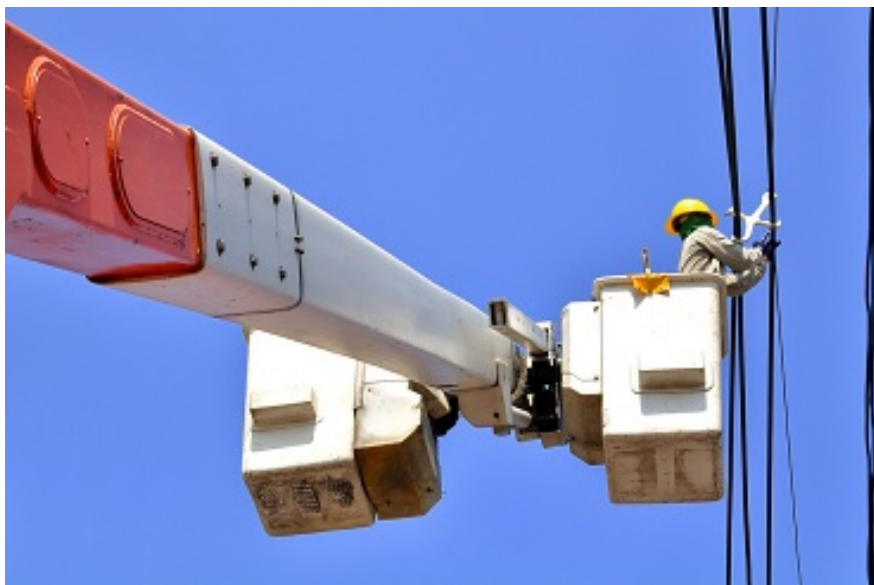
ELECTROINDUSTRIAL INSTALLATIONS FOR OVER 40 YEARS



Energia e Innovazione

**For years ICEEL has created and followed a "security objectives" plan that has lead to advanced results in the field. This involves a policy carried out with pride and satisfaction that has meat constant investments in:**

- planning **training** updates for personnel;
- **sensitizing** personnel towards specific **security** themes;
- constantly soliciting collaborators to respect hygiene and security regulations;
- obtaining **tool** that meet security regulations and specifics for any type of possible danger;
- supplying personnel with all necessary tool for **personal protection**;
- preventing accidents by **evaluating** situations for all types of possible danger.





# QUALITY

**ICEEL considers the integrated management system of the Company an element of strategic importance to the satisfaction of the needs and requirements of the market and its players.**

For this the company operates with an integrated eco-management inspired by the models expressed by the international standards **ISO 9001:2015** and **ISO 14001:2015**.

## THE FOLLOWING QUALITY CERTIFICATIONS ACHIEVED BY THE COMPANY:

### ISO Certification 9001:2015



Reg. Numero	17158 - A	Valido da	2021-10-26
Primo rilascio	2003-11-04	Ultima modifica	2021-10-26
Scadenza	2024-11-03	Settore IAF	28, 19

Certificato del Sistema di Gestione per la Qualità  
**ISO 9001:2015**

Si dichiara che il sistema di gestione per la Qualità dell'Organizzazione:

**ICEEL S.r.l.**

è conforme alla norma UNI EN ISO 9001:2015 per i seguenti prodotti/servizi:

Progettazione, assemblaggio, installazione di impianti e quadri elettrici di bassa tensione, manutenzione di cabine di trasformazione di m.t./b.t., per applicazioni industriali e civili

Chief Operating Officer  
Giampiero Belcredi

Il mantenimento della certificazione è soggetto a sorveglianza annuale e subordinato al rispetto dei requisiti contrattuali di Kiwa Cermet Italia.

Sistema di gestione per la qualità conforme alla norma ISO 9001, valutato secondo le prescrizioni del Regolamento Tecnico Accredia RT-05. La presente certificazione si intende riferita agli aspetti gestionali dell'impresa nel suo complesso ed è utilizzabile ai fini della qualificazione della impresa di costruzione ai sensi dell'articolo 84 del D.Lgs. 50/2016 e s.m.i. e Linee Guida ANAC applicabili. Per informazioni puntuali e aggiornate circa eventuali variazioni intervenute dallo stato della certificazione di cui al presente certificato, si prega di contattare il n° telefonico +39 051 453.3111 o e-mail: info@iceel.com.it.

Il presente certificato è costituito da 1 pagina.

La data di rilascio di questo certificato corrisponde alla data di primo rilascio da parte di altro Ente accreditato

Kiwa Cermet Italia S.p.A.  
Società con socio unico,  
soggetta all'attività di  
direzione e coordinamento di  
Kiwa Italia Holding Srl  
Via Galvani, 22  
40057 Giarola dell'Emilia  
40124  
Tel +39 051 459.3111  
Fax +39 051 703.382  
E-mail: info@iceel.com.it  
www.iceel.it



**ICEEL S.r.l.**

**Sede Legale**

- Via Boezio 4/C 00100 Roma Italia

**Sedi oggetto di certificazione**

- Via San Leonardo 7/F 66054 Vasto (CH) Italia



SGS N° 3074

### ISO Certification 14001:2015



Reg. Numero	17158 - E	Valido da	2021-10-20
Primo rilascio	2003-10-28	Ultima modifica	2021-10-20
Scadenza	2024-10-27	Settore IAF	28, 19

Certificato del Sistema di Gestione Ambientale  
**ISO 14001:2015**

Si dichiara che il Sistema di Gestione Ambientale dell'Organizzazione:

**ICEEL S.r.l.**

è conforme alla norma UNI EN ISO 14001:2015 per i seguenti prodotti/servizi:

Progettazione, assemblaggio, installazione e manutenzione di impianti e quadri elettrici di bassa tensione e cabine di trasformazione di m.t./b.t. per applicazioni industriali e civili

Chief Operating Officer  
Giampiero Belcredi

Il mantenimento della certificazione è soggetto a sorveglianza annuale e subordinato al rispetto dei requisiti contrattuali di Kiwa Cermet Italia.

La presente certificazione è stata rilasciata in conformità al regolamento tecnico Accredia RT-05.

Il presente certificato è costituito da 1 pagina.

La data di rilascio di questo certificato corrisponde alla data di primo rilascio da parte di altro Ente accreditato

Kiwa Cermet Italia S.p.A.  
Società con socio unico,  
soggetta all'attività di  
direzione e coordinamento di  
Kiwa Italia Holding Srl  
Via Galvani, 22  
40057 Giarola dell'Emilia  
40124  
Tel +39 051 459.3111  
Fax +39 051 703.382  
E-mail: info@iceel.com.it  
www.iceel.it



**ICEEL S.r.l.**

**Sede Legale**

- Via Boezio 4/C 00100 Roma Italia

**Sedi oggetto di certificazione**

- Via San Leonardo 7/F 66054 Vasto (CH) Italia



SGS N° 3030



Energia e Innovazione

ELECTROINDUSTRIAL INSTALLATIONS FOR OVER 40 YEARS

## SOA CERTIFICATION

of qualification to the execution of public works for the followings categories:

**OG1 class. I; OG 9 class. III-BIS; OG10 class. II; OG11 class. I; OS30 class. III-BIS.**

### CQOP SOA COSTRUTTORI QUALIFICATI OPERE PUBBLICHE

Codice Identificativo : 02968320965 ( Autorizzazione n.10 del 09/11/2000 )			
<b>ATTESTAZIONE DI QUALIFICAZIONE ALLA ESECUZIONE DI LAVORI PUBBLICI (ai sensi del D.P.R. 207/2010)</b>			
Rilasciato alla impresa: " ICEEL - S.R.L. "			
C. F.:	00691220636	P. IVA:	01491490692
con sede in:	ROMA	CAP:	00193 Provincia: RM
Indirizzo:	VIA BOEZIO 4/C		
Iscritta alle CCIAA di:	RM	al n.:	00691220636
<b>Rappresentanti legali</b>		<b>Direttori tecnici</b>	
Nome e Cognome	Codice fiscale	Nome e Cognome	Codice fiscale
MARCELLO DASSORI	DSMCL57P04L304U	P.I. STEFANO DE NOBILE	DNBSFN69E27G141W
<b>Categorie e classifiche di qualificazione:</b>			
<b>Categoria</b>	<b>Classifica</b>	<b>C.F. direttore tecnico cui è connessa la qualificazione</b>	
OS 1	I		
OG 9	III-BIS		
OG 10	II		
OG 11	I		
OS 30	III-BIS		
L'impresa possiede la certificazione (art. 3 comma 1, lettera mm) del D.P.R. 207/2010 valida fino al 03/11/2024 rilasciata da KIWA CERMET ITALIA S. p.A..			
Attestazione n.:	62497/10/00	(N.ro prog./ codice SOA)	Sostituisce l'attestazione n.:
			44097AL/10/00 (N.ro prog./ codice SOA)
Data rilascio attestazione originaria	15/01/2018	Data scadenza validità triennale	14/01/2021
		Data scadenza intermedia (cons. stab.)	
Data rilascio attestazione in corso	08/11/2021	Data effettuazione verifica triennale	15/01/2021
		Data scadenza validità quinquennale	14/01/2023
<b>Firmatari</b>			
Rappresentante Legale	ZANABONI ANTONIO	Direttore Tecnico	GALLIANO ANTONIO PAOLO

Pagina 1 di 1

## SNAM GROUP QUALIFICATION

### LL01AA24

Realization of solar photovoltaic installations

### LL02AB20

Construction and maintenance of electrical installat. related civil use

### LL01AE03

Electrical and instrumental installations  
under EEC threshold

### SS06AB01

Maintenance of installations/equipments electrical/instrumental

HQ: Via Boezio 4/C – 00913 ROME (ITALY)  
O: Via San Leonardo 7F – 66054 Vasto (CH) (ITALY)

P.IVA 01491490692  
C.F. 00691220636

tel. 0039 0873 301014 - fax 0039 0873 301016  
[www.iceel.it](http://www.iceel.it) - mail: [info@iceel.it](mailto:info@iceel.it)



Energia e Innovazione

ELECTROINDUSTRIAL INSTALLATIONS FOR OVER 40 YEARS

## CUSTOMERS



### Denso Manufacturing Italia SPA

Electric work for expansion of site.  
San Salvo.



### Fox Petroli SPA

Installation at site.  
Punta Penna, Vasto (CH)



### Honda Italia SPA

Building expansion.  
Atessa (CH)



### Impresa Sipes SPA

Public Hospital "G. Bernabeo"  
Ortona (CH);  
Bus Station Terminal  
Herio Square, Chieti (CH).



### VMA nv (Saint-Martens-Latem BELGIUM)

Supermarket distribution CONAD  
Z.I. San Salvo (CH)



### Centro Universitario "G. D'Annunzio"

Faculty of Medicine.  
Chieti



### Consorzio ASI per lo sviluppo industriale del Sangro

Industrial water pumping system  
serving Fiat/Sevel.Z.I. Piazzano  
Atessa (CH)



### Arena Holding/Solagrital SPA

Site.  
Bojano (CB)



### Gruppo alimentare Amadori

Treste Animals Farms  
Cupello (CH)



### Com.Pi. S.r.l.

Site II  
Loc. Saletti – Z.I. Atessa (CH)



### Robotec S.r.l.

Site  
Z.I. Val Sinello – Gissi (CH)



### Palace Hotel

Hotel Convention Center  
Marina di Vasto (CH)



### AZ Consortile Acquedottistico Val Pescara-Tavo-Foro

Electric water capturing at source  
Tirino inferiore Loc. San Rocco.  
Bussi sul Tirino (PE)



### GIR SUD S.r.l.

Plastic mould manufacturer for  
automobile components.  
Z.I. Val Sinello – Gissi (CH)



### Ciaf Ambiente

Provisionary storage of third party  
non-toxic waste and internal  
toxic/poisonous waste  
Loc. Saletti – Atessa (CH)



### Consorzio Intercomunale C.I.V.E.T.A.

Electric installation;  
Revamping Technological Pole.  
Loc. Valle Cena – Cupello (CH)



Energia e Innovazione

## ELECTROINDUSTRIAL INSTALLATIONS FOR OVER 40 YEARS



**Saquella 1856**

Coffee roasting company.  
Loc. Torretta – Pescara (PE)



**Degremont Italia SPA**

Filtering system c/o water treatment.  
COASIV – San Salvo (CH)



**CO.A.S.I.V. Consorzio per l'Area di sviluppo Industriale del Vastese**

Water conditioning system installation.  
Z.I. San Salvo (CH) / Z.I. Val Sinello (CH)



**Pamec**

Moulds and tubing works for building.  
Z.I. Punta Penna – Vasto (CH)



**Cantina Sociale Gugliesi**

General electric installation.  
Gugliesi (CB)



**Mariani SPA**

Site.  
Z.I. Atessa (CH)



**Honeywell-Garrett SPA**

Site.  
Z.I. Atessa (CH)



**ASL n.2 Lanciano-Vasto-Chieti**

Hospitals  
Lanciano / Gissi / Ortona (CH)



**Industrie Chimiche Puccioni SPA**

Site  
Z.I. Punta Penna – Vasto (CH)



**Generale Prefabbricati SPA**

Shopping Center Insieme  
Intercomm. San Salvo (CH)



**Consorzio Costruzione Porti SPA**

Boat harbour Marina di Pescara  
Pescara (PE)



**Consorzio Acquedottistico Lanciano**

Primary water pumping station  
Palena (CH)



**Pastificio Del Verde**

New production department sites  
Fara San Martino (CH)



**Mario Negri Sud**

Centre for Pharmacology research  
Santa Maria Imbaro (CH)



**AMP Italia SPA**

Site  
Z.I. San Salvo (CH)



**Consorzio Ansaldo Italsolar**

Photovoltaic Central 1MWp  
Elio 1 Cupello (CH)



Energia e Innovazione

## ELECTROINDUSTRIAL INSTALLATIONS FOR OVER 40 YEARS



### Enel DCO

Thermoelectric turbogas plant  
Larino (CB)



### I.C.O.M.I.

Silicon dust micronization plant  
Z.I. San Salvo (CH)



### Ordine Figlie di San Camillo

General Hospital G. Vannini  
Roma



### Touring Club Italiano

Tourist Village  
Isole Tremiti (FG)



### Consorzio ASI per lo sviluppo industriale del Sangro

General electric installation in consortium area.  
Casoli (CH)



### Società Vinicola "Vini del Golfo"

General electric installation for industrial  
C.da Lebba – Vasto (CH)



### Imsa Cementi Gruppo Sacci

Site.  
Z.I. Punta Penna – Vasto (CH)



### Consorzio di Bonifica Sud Trigno-Sinello-Osento

Remote dam control and measuring system.  
Ponte Liscione San Salvo (CH)



### Sercom SPA

Shopping Center COSTA VERDE  
Montenero di Bisaccia (CB)  
Shopping Center LE GRANGE  
Piedimonte San Germano (FR)  
Shopping Center LE MASSERIE  
Ragusa  
Shopping Center LE VIGNE  
Castrofilippo (AG)  
Shopping Center IL CASALE  
San Cataldo (CL)



### Consorzio CONIV SPA Servizi Ecologia

Water conditioning system installation.  
Loc. Padula Montenero di Bisaccia (CB)  
Industrial water treatment system  
Z.I. San Salvo (CH)



### Centro per l'Arte Contemporanea "L. Pecci"

Requalification and regulatory adaptation of existing building;  
Creation of a new Cinema Auditorium;  
Redevelopment and regulatory adaption of local bar-bistrot.  
Museo Viale della Repubblica Prato



### Investire SGR SPA – Gruppo Beni Stabili – Revalo SPA

Rebuilding electrical system, fire detection system and security sound diffusion system EVAC  
Torri Ex INPS Comune di Genova.



### COCIV per conto di Rete Ferroviaria Italiana (RFI)

Electrical systems Base Camp  
CBP2



### ARKEMA srl

Realization of electrical lighting system for the building  
Loc. Val Sinello – Z. I. Gissi (CH)



### Nippon Sheet Glass Co, Ltd (NSG)

Energy retraining of lighting fixtures.  
Site Pilkington Z.I. San Salvo (CH)



### Centro Farmaceutico e Ambulatoriale Dott. Giovannelli

Electrical system, light, driving force and auxiliary Pharmacy and Clinics  
Via G. Spataro – Vasto (CH)



Energia e Innovazione

## ELECTROINDUSTRIAL INSTALLATIONS FOR OVER 40 YEARS

Pian dei Grilli – Fraconalto (AL)



### Beni Stabili SPA SIQ

Regulatory adaptation for building energy accounting Fideuram – Intesa San Paolo.  
Via delle Lame – Bologna (BO)



### Atlantica Properties SPA

Regulatory adaptation for building energy accounting Assicurazioni GENERALI.  
Via XX Settembre – Trieste (TS)



### CPL Concordia Soc. Coop. SPA

Public lighting system requalification.  
Comune di Casalbordino (CH)



### Parrocchia San Paolo Apostolo

Church extension and new bell tower.  
Parrocchia San Paolo Apostolo Vasto (CH)



### Investire S.G.R. SPA

Refurbishment of the building site fire-fighting smoke detection system  
Comando Guardia di Finanza  
Via Ramusio - Milano



### Roma Capitale Municipio II

Requalification and extraordinary maintenance general electrical systems Mercato Flaminio II  
Via Guido Reni – Roma



### Comune di Vasto (CH)

Redevelopment and expansion of the cycle path.  
Marina di Vasto (CH)



### Sercom SPA

Electrical system, light, driving force, access management and auxiliary services at the Hotel “The Hub”.  
Via Polonia – Milano



### Parrocchia San Giuseppe

Relamping of the lighting system of the Cattedrale Chiesa San Giuseppe. Vasto (CH)



### Decathlon

Electrical system, light, driving force, and auxiliary services at the new DECATHLON.  
Z.I. San Salvo (CH)



### Farmacia Dott.ssa Sansanelli

Electrical system, light, driving force and auxiliary Pharmacy and Clinics  
Via del Giglio – Vasto (CH)